

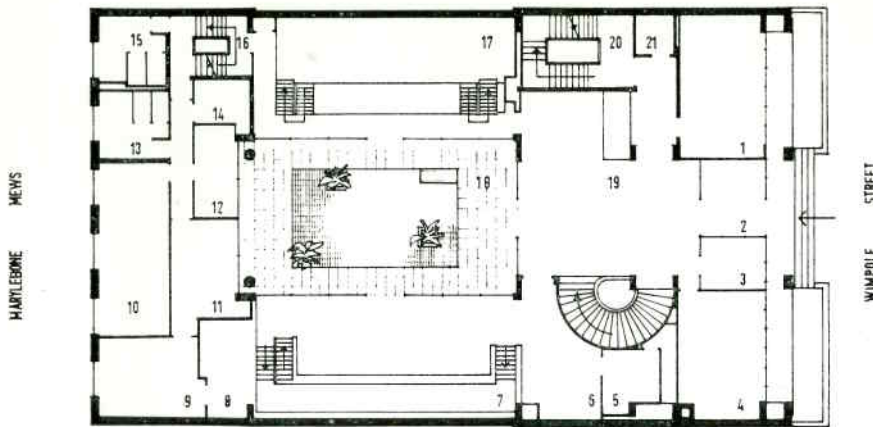
BRITISH DENTAL ASSOCIATION



THE NEW HEADQUARTERS

The new B.D.A. Headquarters building in Wimpole Street is nearing completion. Designed to harmonise with the neighbouring facades, and built around a small central courtyard, in accordance with the requirements of the Planning Authority, the building presents a dignified and workmanlike appearance without ostentation.





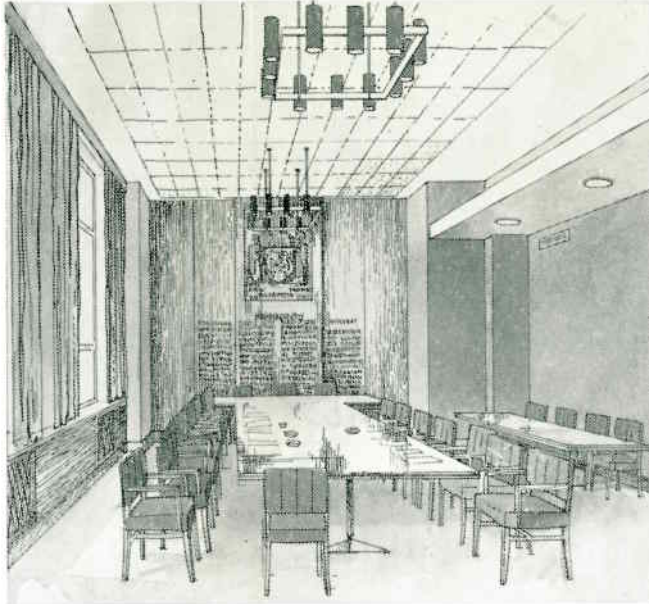
KEY

- 1 Members' Room
- 2 Lobby
- 3 Reception and telephone
- 4 Society Room
- 5 Stationery Store
- 6 Library Reception
- 7 Library & Reading Room
- 8 Rare Book Room
- 9 Librarian's Assistants
- 10 Unallocated
- 11 Librarian's Room
- 12 Museum Curator's
- 13 Men's Cloakroom
- 14 Curator's Store
- 15 Women's Cloakroom
- 16 Stairs
- 17 Museum
- 18 Court Yard over Lecture Theatre/Board Room
- 19 Foyer
- 20 Staircase
- 21 Lift

The site is rectangular, having a frontage of 65 feet to Wimpole Street, and a depth of 113 feet to Marylebone Mews. The main structure facing Wimpole Street has five upper floors and is joined to the smaller, two-floored building in Marylebone Mews by galleries on the sides of the courtyard. The south gallery houses the library and the north gallery the museum.

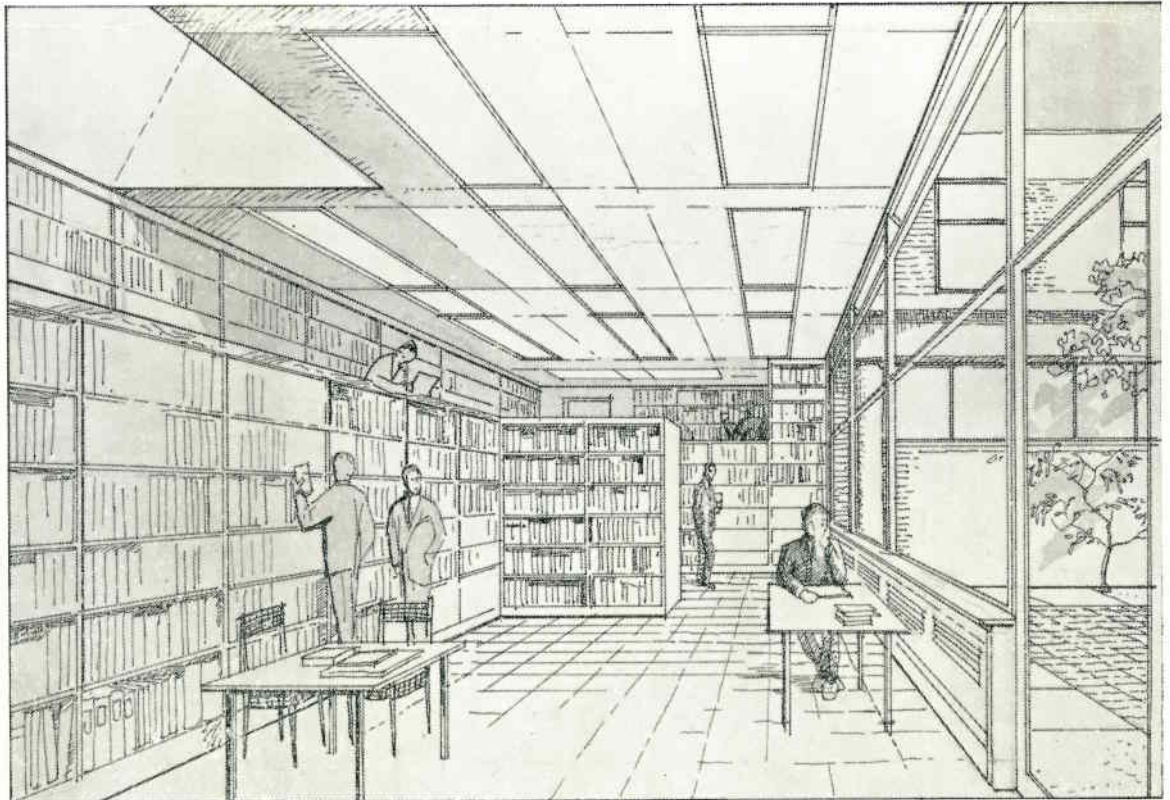
The main features of the building are:-

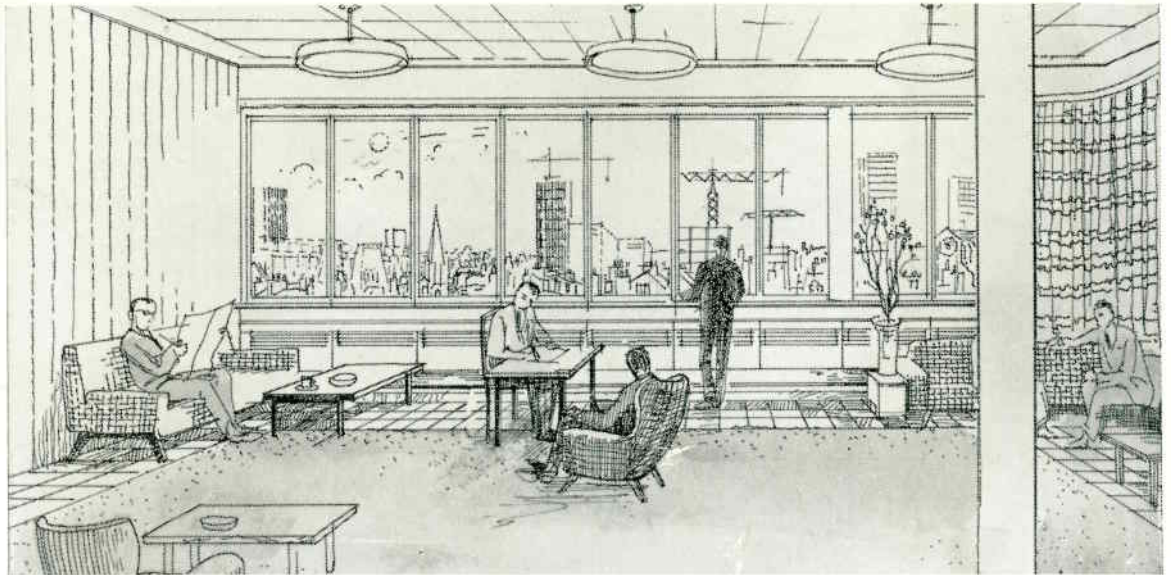
Lower Ground Floor	The Lecture and Board Room.
Ground Floor	Main entrance and Hall, Members' Reading Room, Library and Museum.
First Floor	The Council and Committee Rooms, the Chairman's Room and the Secretary's Room.
Third Floor	The Office of the Federation Dentaire Internationale, and other office space available for letting.
Second & Fourth Floors	The administrative offices of the Association. These floors have been specially designed to enable the work of the Association to be carried out with greater efficiency and economy.
Fifth Floor	The Members' Lounge. This room has extensive views over London.
The Mews	The offices of the British Dental Journal.



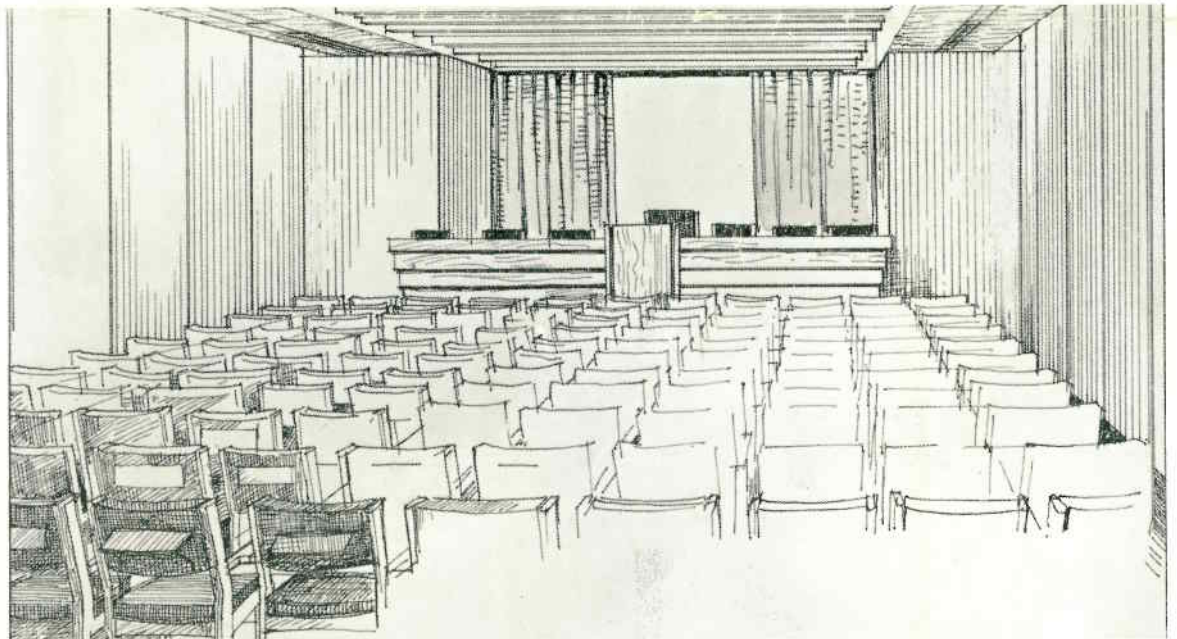
The Council Room will be used as the Main Committee Room, and can be extended by means of a folding partition to accommodate 36 persons.

The Library is one of the most comprehensive dental libraries in the world today.





Facilities for light refreshments will be available in the Members' Lounge.



The Lecture Theatre or Board Room which seats 130 people, is accoustically designed, has a fully equipped projection room and will be available for letting to other Societies.

The drawings contributed by the Architect—Frank Scarlett, F.R.I.B.A.